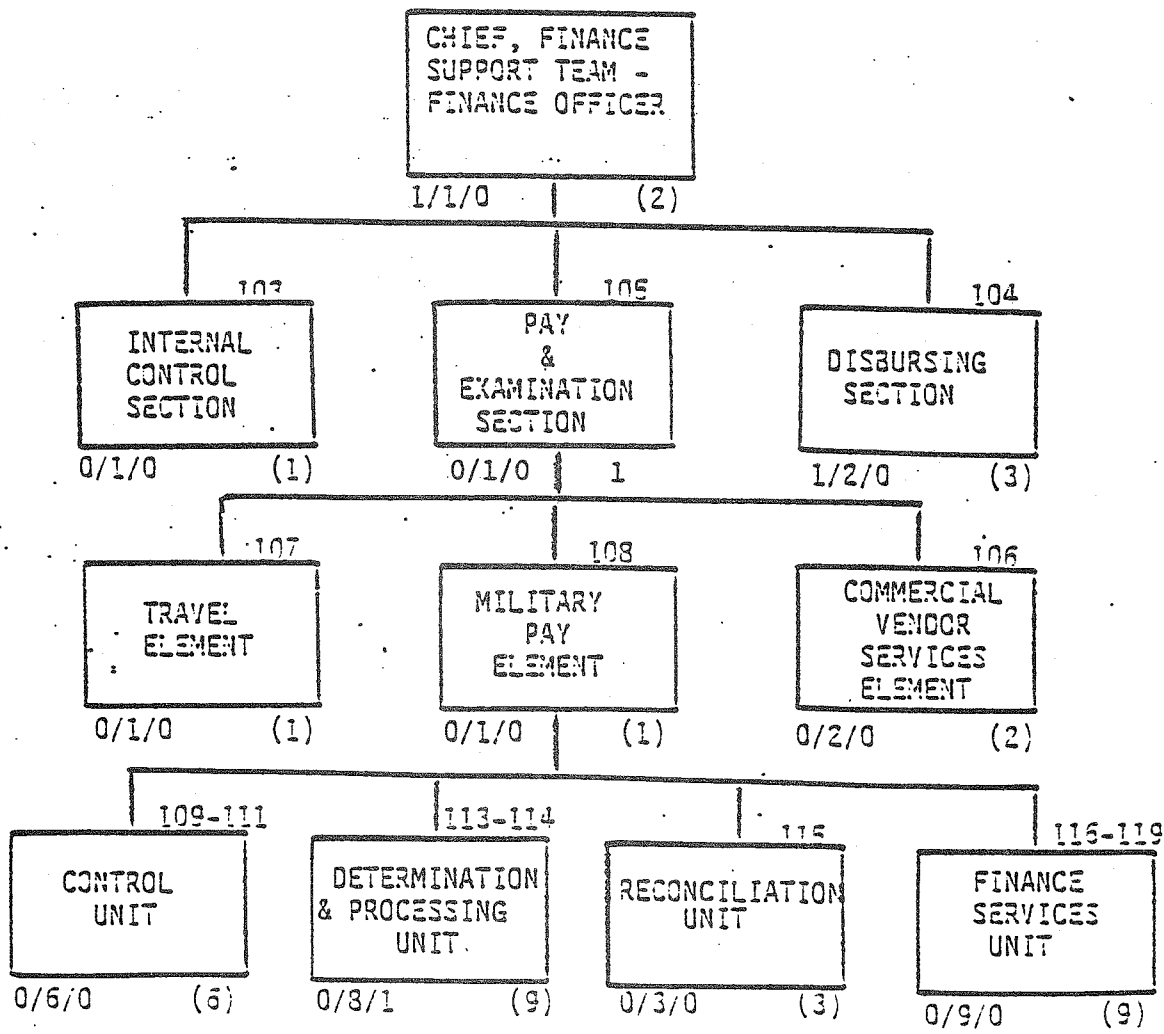


(MTOE PARA)
176TH FINANCE SUPPORT TEAM
ORGANIZATIONAL STRUCTURE
CP HUMPHREYS
 OFF/ENL/CIV/ (TOTAL)



NOTE: STAFFING MAY BE CROSSLEVELED BETWEEN DISBURSING, TRAVEL, AND MILITARY PAY TO SUPPORT WORKLOAD; TRAVEL (107) AND COMM'L VENDOR SVCS (106) ARE COMBINED IN PEACETIME.

RECAP

	OFF	ENL	CIV	TOTAL
176TH FST	2	35		37
WDCV-99			0	0
NAF			0	0
KATHSA		0		0
TOTAL	2	35	0	37